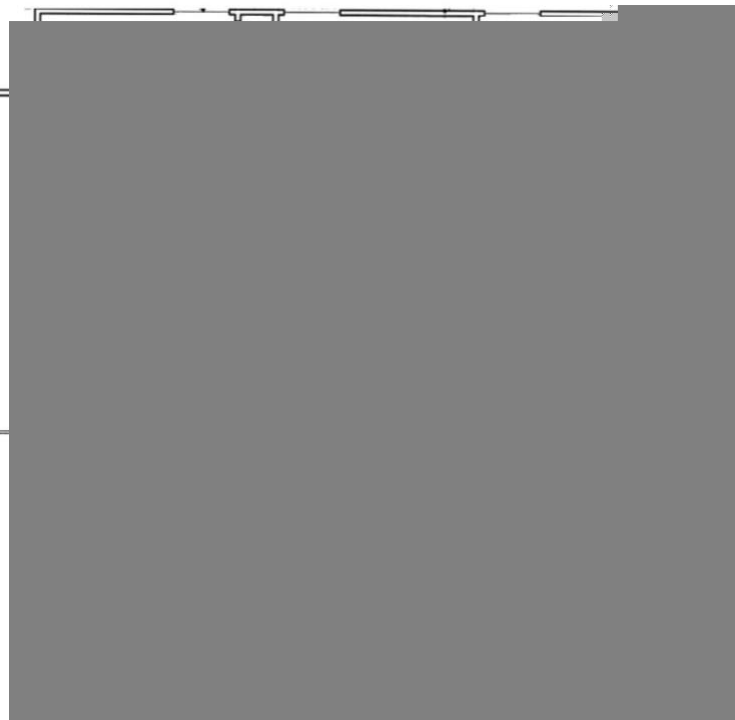
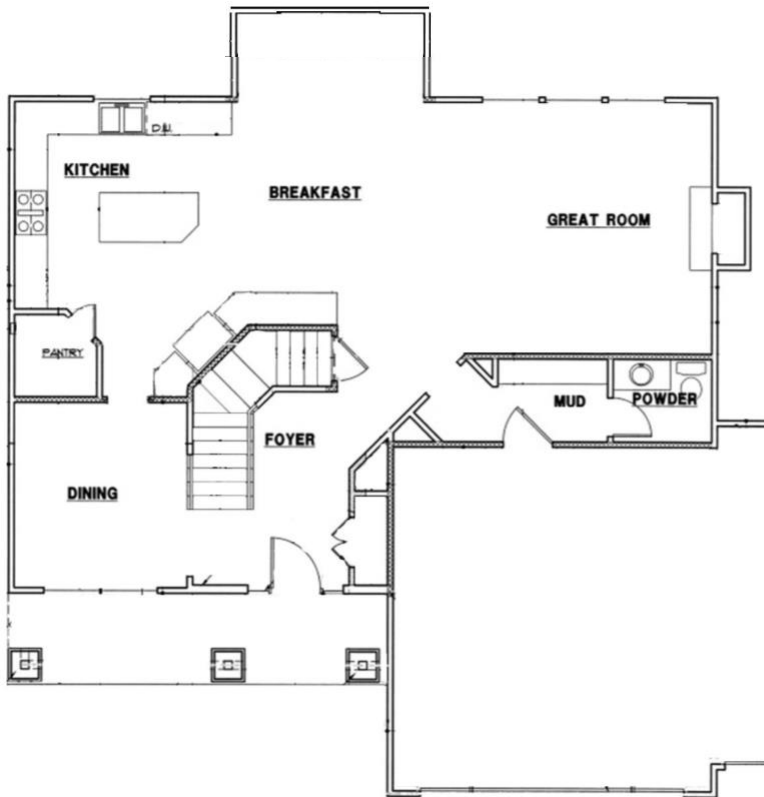


2 Story

The Homestead By Woodman Homes



4 Bedroom, 3.1 Bath, 3 Car Garage, 2,475 sq ft (approx.)



Visit us anytime at www.Prairieridgespringhill.com

Tyler Grieve, 913.787.4120 or Toni Hoffman, 913.991.4194



The Homestead

Standard Features

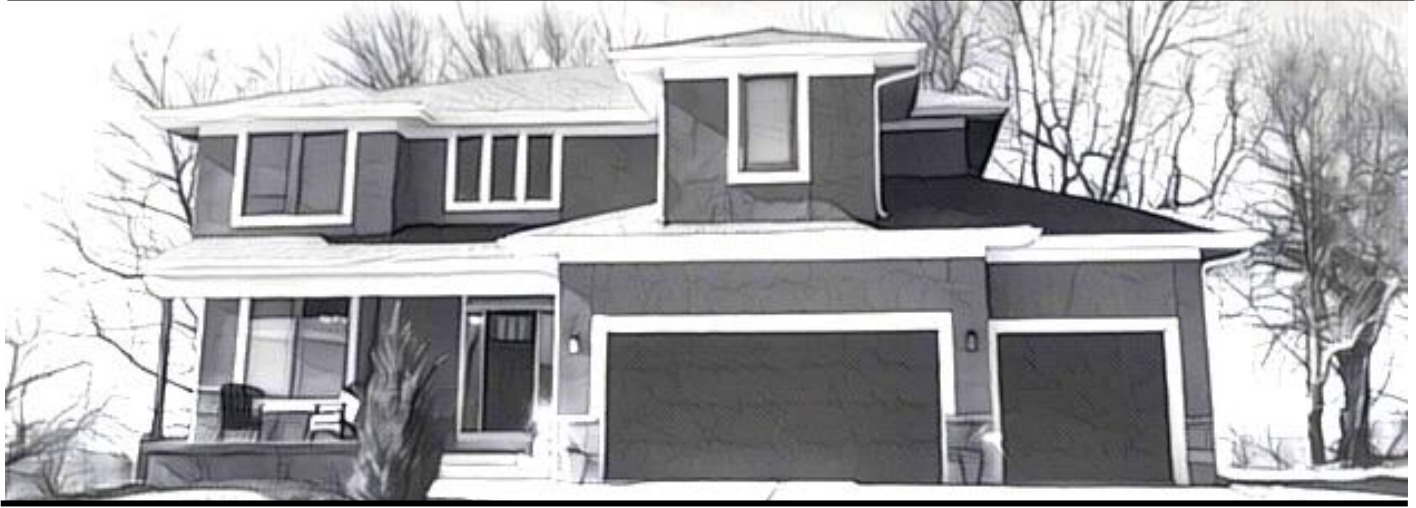
- Custom kitchen cabinets w/hidden hinges & full extension steel ball bearing rollers.
- Custom Oversized island
- Stainless steel appliance package includes dishwasher, range, microwave oven, & exhaust fan for vent hood
- ORB or satin nickel plumbing fixtures throughout
- Undermount sink basins in bathrooms
- Upgraded lighting package including upgraded fixtures & under mount cabinet lighting in kitchen
- Granite counter tops in kitchen & baths
- Upgraded tile backsplash in kitchen
- Hardwood floors in entry, kitchen, dining areas, & mud room
- Mudroom w/storage bench
- Master suite w/ceiling fan, large walk-in closet. Master bath w/walk-in shower, jetted tub, & double vanity
- Second floor laundry room
- Upgraded trim package & wood wrapped windows throughout, oversized baseboard & crown molding on main floor
- Hand textured ceilings throughout
- Decorative metal spindles
- Gas fireplace with custom built mantle
- Cable outlets in all bedrooms & great room
- Stucco front exterior w/stone detail
- Deck or patio (dependent upon elevation)
- Fescue sod w/upgraded landscape package
- Energy features; Low-E windows, R-49 attic insulation, Foam & caulk package, Whole house wrap, Smart siding & trim package
- 30 year timberline style roof
- Lennox gas furnace
- 9' basement foundation, sump pump, passive Radon pipe
- 1 Garage door opener on large door

Visit us anytime at www.Prairieridgespringhill.com

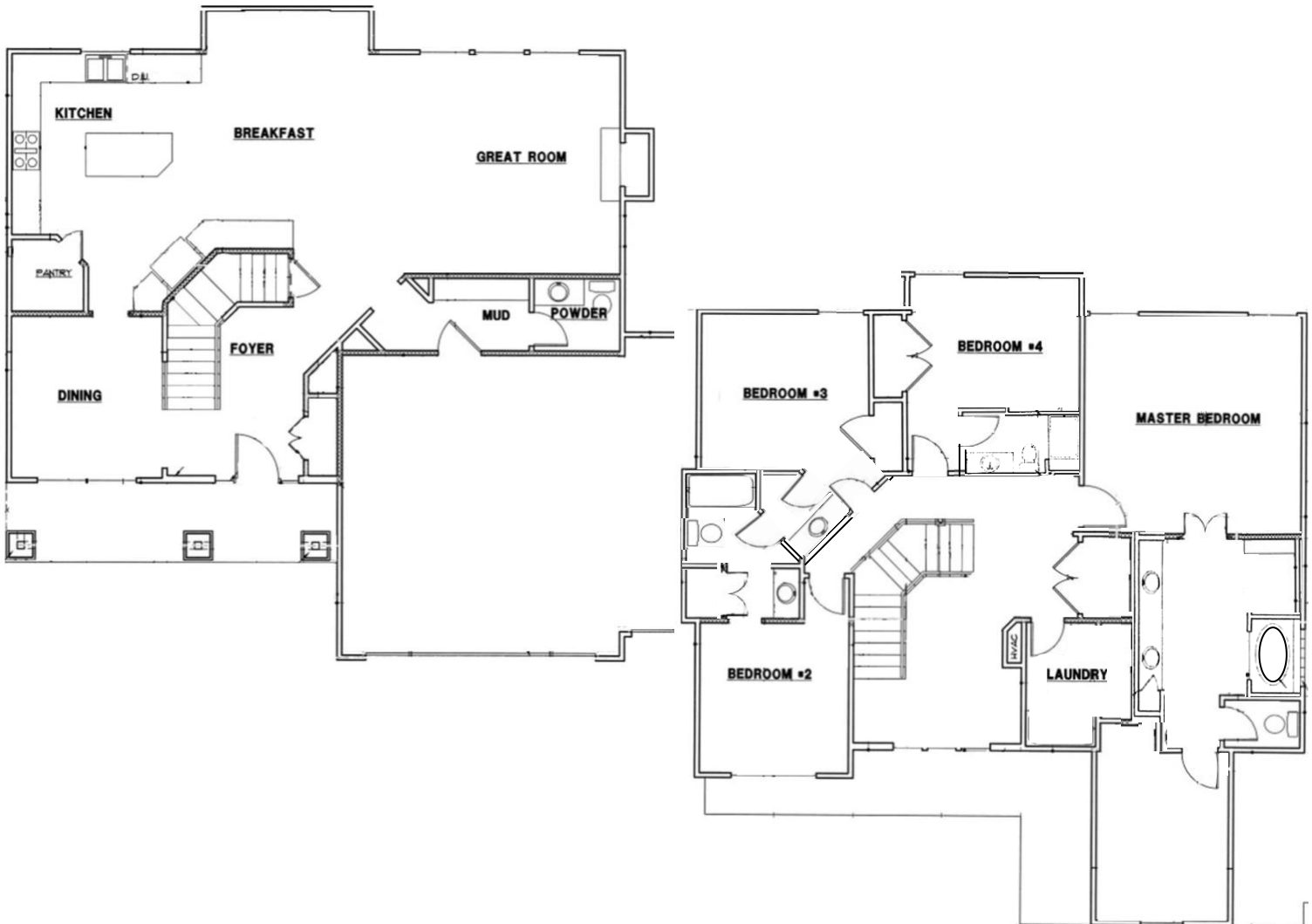
Tyler Grieve, 913.787.4120 or Toni Hoffman, 913.991.4194

2 Story

The Homestead II By Woodman Homes



4 Bedroom, 3.1 Bath, 3 Car Garage, 2675 sq ft (approx.)



Visit us anytime at www.Prairieridgespringhill.com

Tyler Grieve, 913.787.4120 or Toni Hoffman, 913.991.4194



The Homestead II

Standard Features

- Custom kitchen cabinets w/ hidden hinges & full extension steel ball bearing rollers.
- Custom Oversized island
- Stainless steel appliance package includes dishwasher, range, microwave oven, & exhaust fan for vent hood
- ORB or satin nickel plumbing fixtures throughout
- Undermount sink basins in bathrooms
- Upgraded lighting package including upgraded fixtures & under mount cabinet lighting in kitchen
- Granite counter tops in kitchen & baths
- Upgraded tile backsplash in kitchen
- Hardwood floors in entry, kitchen, dining areas, & mud room
- Mudroom w/storage bench
- Master suite w/ceiling fan, large walk-in closet. Master bath w/walk-in shower, jetted tub, & double vanity
- Second floor laundry room
- Upgraded trim package & wood wrapped windows throughout, oversized baseboard & crown molding on main floor
- Hand textured ceilings throughout
- Decorative metal spindles
- Gas fireplace with custom built mantle
- Cable outlets in all bedrooms & great room
- Stucco front exterior w/stone detail
- Deck or patio (dependent upon elevation)
- Fescue sod w/upgraded landscape package
- Energy features; Low-E windows, R-49 attic insulation, Foam & caulk package, Whole house wrap, Smart siding & trim package
- 30 year timberline style roof
- Lennox gas furnace
- 9' basement foundation, sump pump, passive Radon pipe
- 1 Garage door opener on large door

Visit us anytime at www.Prairieridgespringhill.com

Tyler Grieve, 913.787.4120 or Toni Hoffman, 913.991.4194